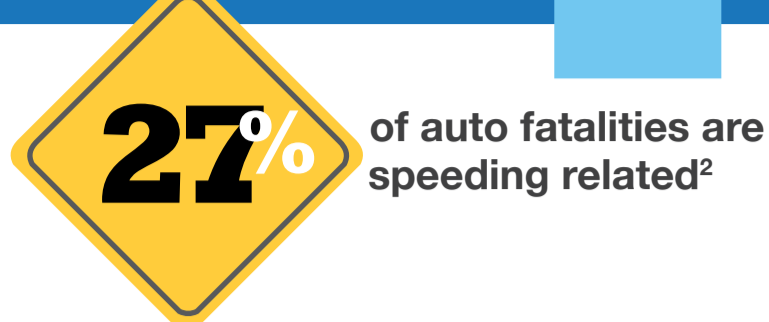
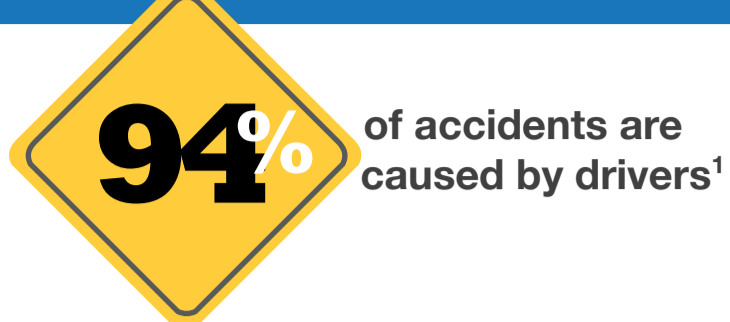




# DRIVER SAFETY STARTLING STATS

is your company at risk



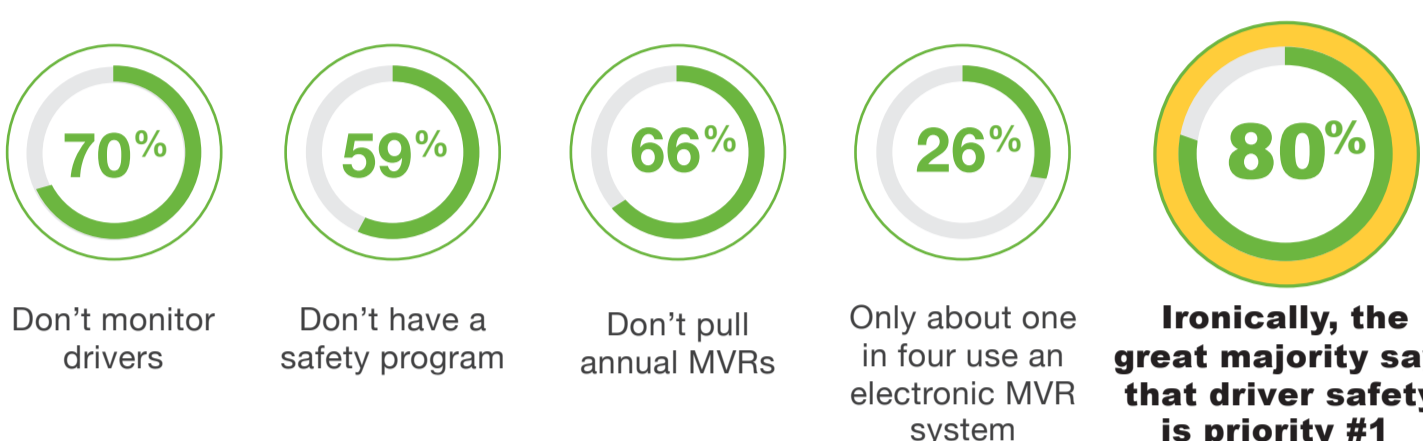
you must

## KNOW YOUR DRIVERS



- > Past and present incidents in personal and business vehicles
- > Awareness of driving behaviors on and off the job
- > Recognize that past behavior is the best predictor of future behavior

### SURVEY OF COMPANIES WITH AUTOMOTIVE FLEETS<sup>3</sup>



## PROTECT WHAT'S IMPORTANT

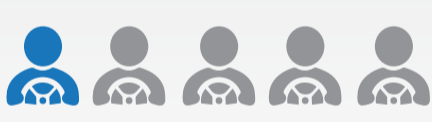


Risky driving is **costly to the community**, not just the bottom line<sup>4</sup>



- \$242B** The economic impact of motor vehicle crashes in 2010
- \$1.4M** Economic cost to society for each fatality
- \$1M** Average cost of each critically injured survivor
- \$57.6B** Cost of lost workplace productivity

**1 in 5**



Drivers will be involved in a crash annually<sup>5</sup>

**1 in 2**



Personal injury lawsuits involve an auto accident<sup>5</sup>

**3 in 5**

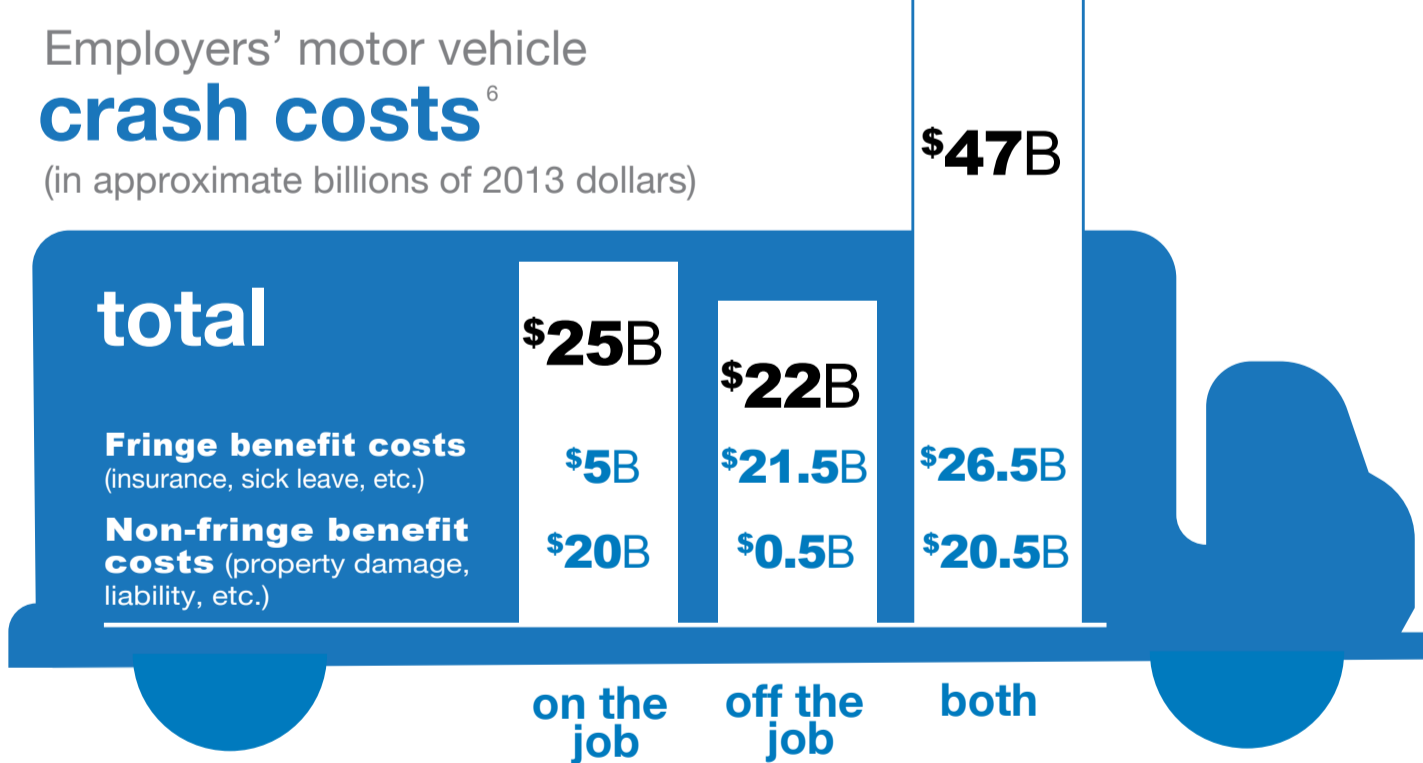


Personal injury lawsuits are won by the plaintiff<sup>5</sup>



## Smashing THE bottom line

Employers' motor vehicle **crash costs**<sup>6</sup>  
(in approximate billions of 2013 dollars)



## WHAT CAN COMPANIES DO



- ✓ Start with a comprehensive baseline MVR that scores drivers against your safety policy on day 1 – identifying the best ones or those who need training
- ✓ Continuously monitor drivers' MVR records going forward and receive automated alerts when a change occurs
- ✓ Intervene with remedies to maintain a team of drivers who are consistently safe on the road

Contact SambaSafety to find out more.

888.947.2622 | sales@sambasafety.com | sambasafety.com



1 National Highway Traffic Safety Administration. "Traffic Safety Facts." Feb. 2015.  
2 National Highway Traffic Safety Administration. "Quick Facts 2015." 2015.  
3 Driver Risk and Safety Management Survey. Automotive Fleet magazine. 2014.  
4 The Economic and Societal Impact of Motor Vehicle Crashes. 2010 (Revised May 2015), NHTSA.  
5 National Highway Traffic Safety Administration. 2013 Motor Vehicle Crash Study. The Legal Finance Journal. Aug. 2011.  
6 "Cost of Motor Vehicle Crashes to Employers – 2015." Network of Employers for Traffic Safety. March 2016.